

Shanghai ONBON Technology Co.,Ltd

User manual for YQ server mode communication

Software user manual

2015-8-28

Copyright

All rights reserved. No part of this publication may be reproduced in any form by print, photo print, microfilm or any other means without written permission by ONBON.

© 2010-2014Onbon

版本历史:

版本号	日期	作者	描述
1.0	2015-8-28	陈敏	服务器模式具体使用方法

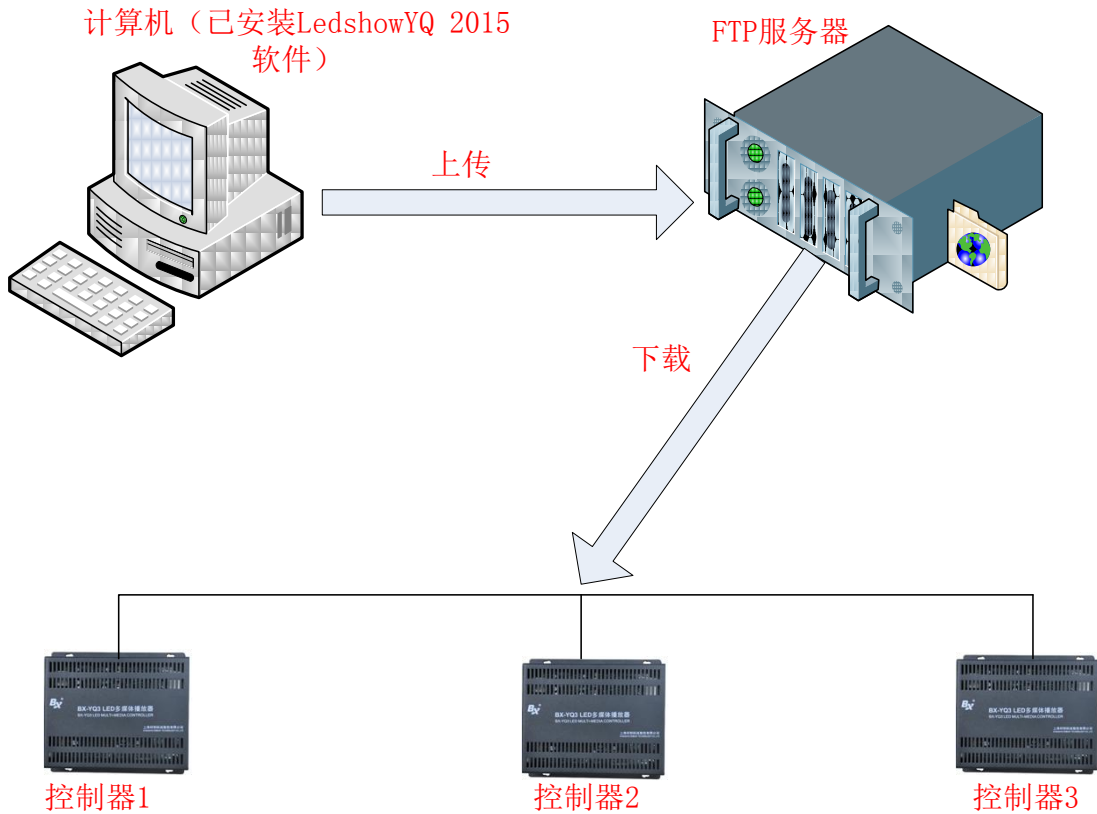
Catalog

1. why to use server mode communication	4
2. Preparation.....	5
3. Steps	6
3.1 Built FTP server	6
3.1.1 Built FileZilla Server	6
3.1.2 Built Server-U.....	11
3.2 Set controller IP infomation	20
3.3 Controller connect with the wireless router	29
3.3.1 connect with the 3G industrial wireless router	29
3.3.2 connect with the 3G/4G industrial router	31
4. CONTACT US.....	35

YQ server mode communication user manual

1. why to use server mode communication

Server mode can solve the problem how to centralized control all the display screen in different cities or places by far distance.



2. Preparation

When use the server mode communication ,users should prepare the below tools:

Name	Quantity	Mark
Computer	1	
FileZilla Server software or Server-U software	1	Download address: https://filezilla-project.org/download.php?type=server
YQ series controller	1	one or more pcs
Network cable	1	Based on control card quantity
3G industrial wireless router or 3G/4G modem	1	Based on control card quantity
5V power	1	Based on control card quantity
3G or 4G SIM card	1	Based on router quantity

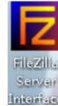
3. Steps

3.1 Built FTP server

There is two methods to built the FTP Server. FileZilla Server and Server-U, users can select one of them.

3.1.1 Built FileZilla Server

Step 1



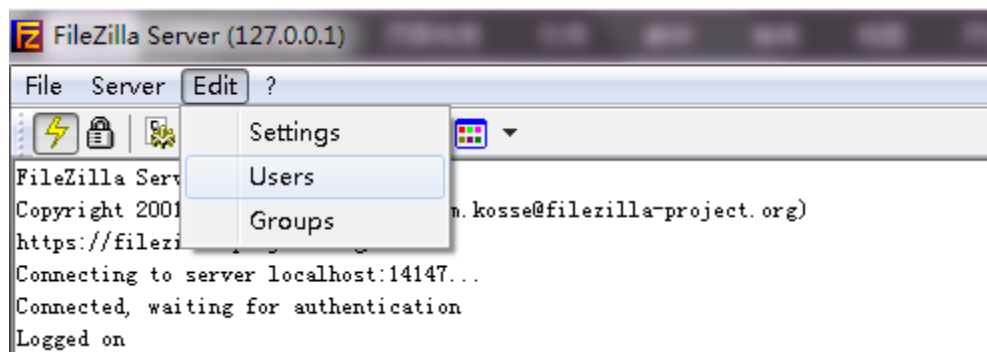
Install FileZilla Server, and open software all the configuration for server ip and port is fixed already ,only click connect is ok. Shown as in the image-1



Image-1

Step 2

Add users in the edit menu. Shown As image-2.



Imag- 2

Step 3

Click add button then input the guest name and password (name and password must be “guest”)
Shown as in Image -3

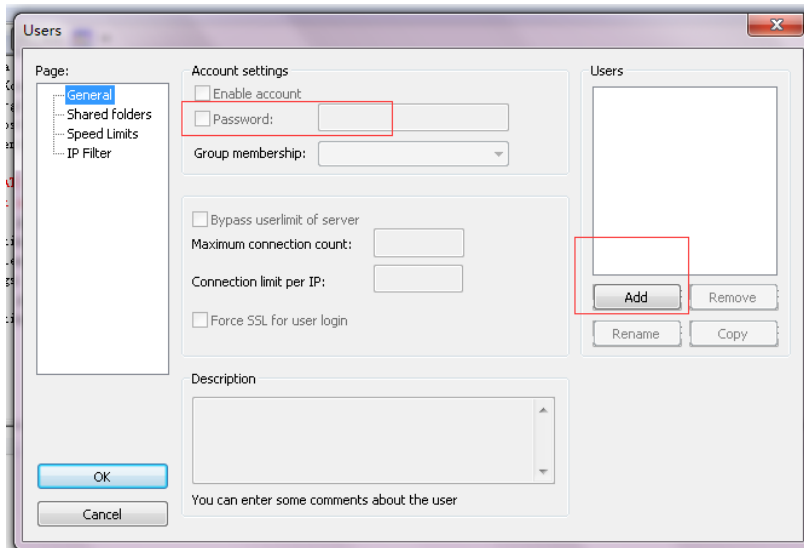


Image- 3

Step 4

click shares folders ,click “add” button to select one folder as shared folder ,this folder will be a connection for controller and software. As shown in image-4.

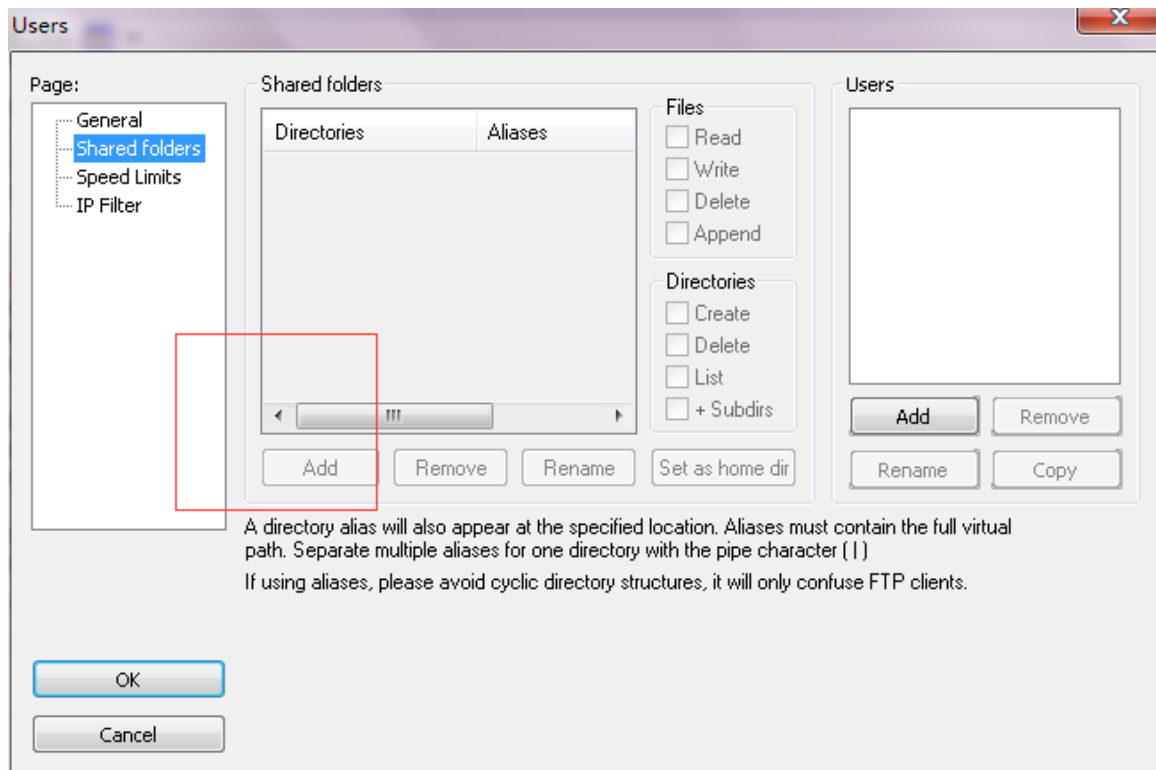


Image- 4

Step 5

after finish the shared folder ,users can select the catalog and set limitation to them. users should select all the functions.

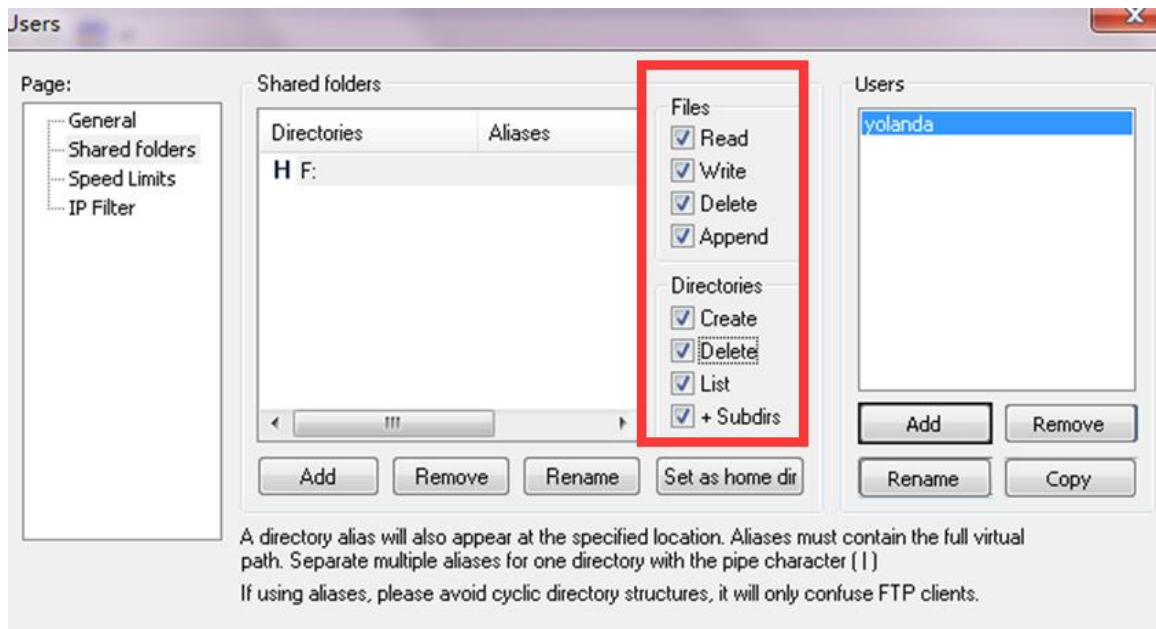


Image- 5

Step 6

Click the OK button then finish the setting. As shown in image-6

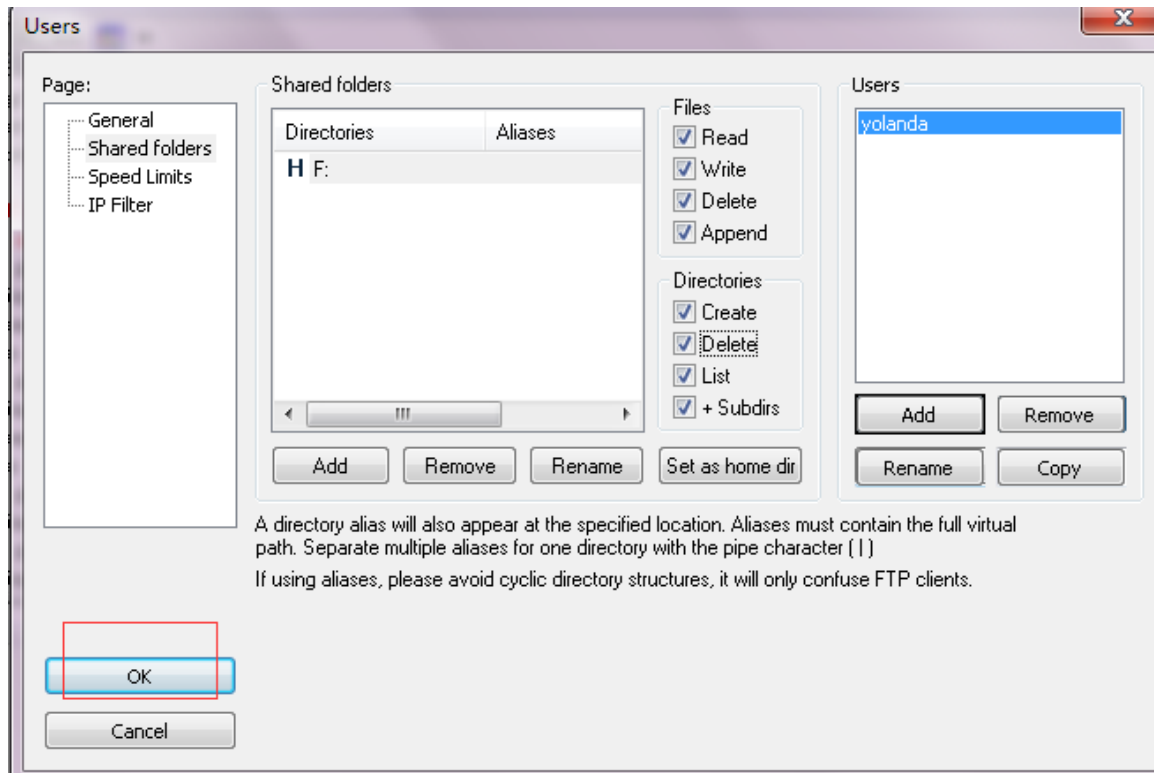


Image- 6

Step 7

Click the edit button –settings as shown in image-7

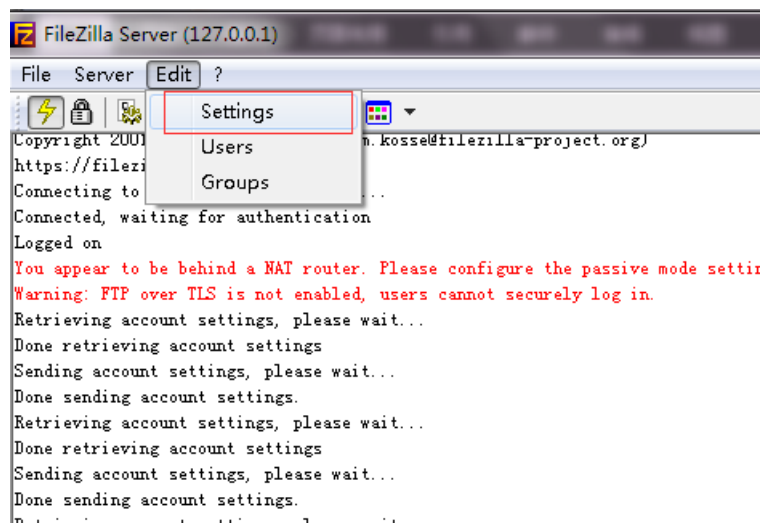


Image- 7

Step 8

Write the listen ports, this ports is very important and will used in the YQ software, users must remember it .two conditions to write the port: 1.computer connect the network without router ,then the listen ports can write randomly(in range of 1-65535)

2.computer connect the network with router ,then write the computer IP mapping port (different router has different settings for example as shown in image-8)then click the OK as shown in image-9 is ok.



Image - 8

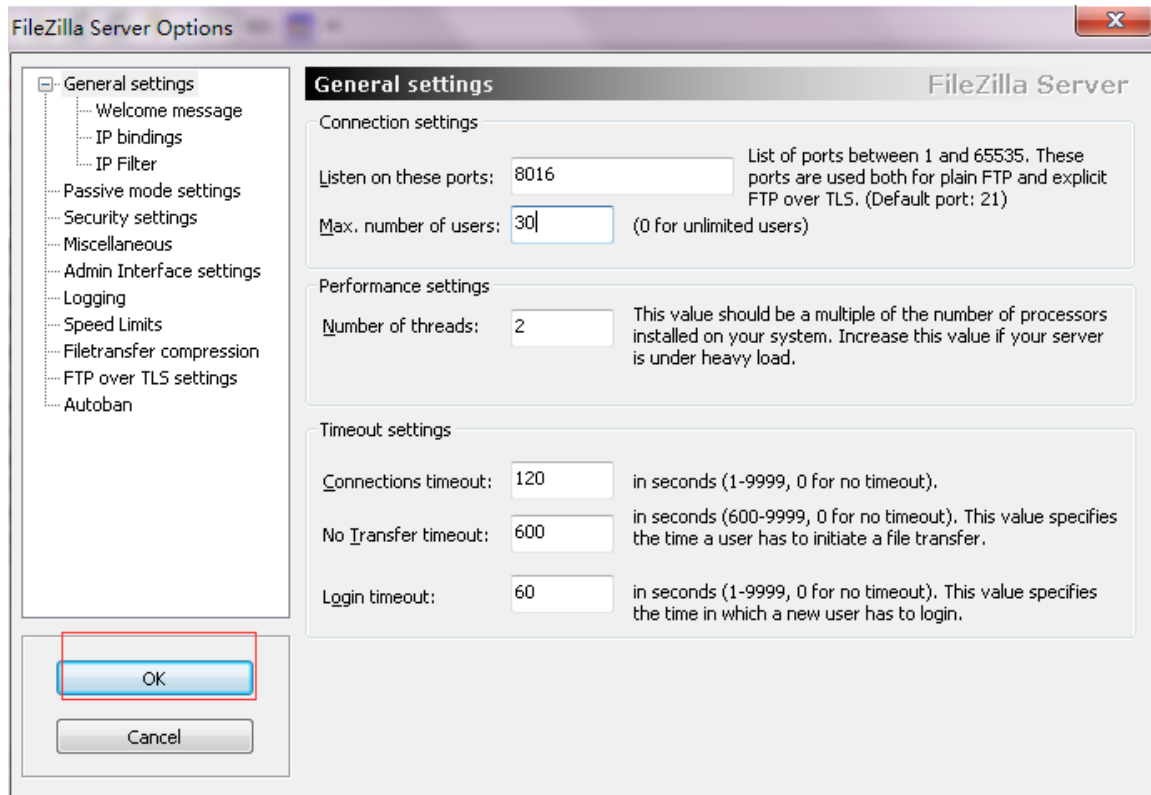



Image- 9

3. 1. 2 Built Server-U

Step 1



Install Server-U click  to open the software, as shown in image-10

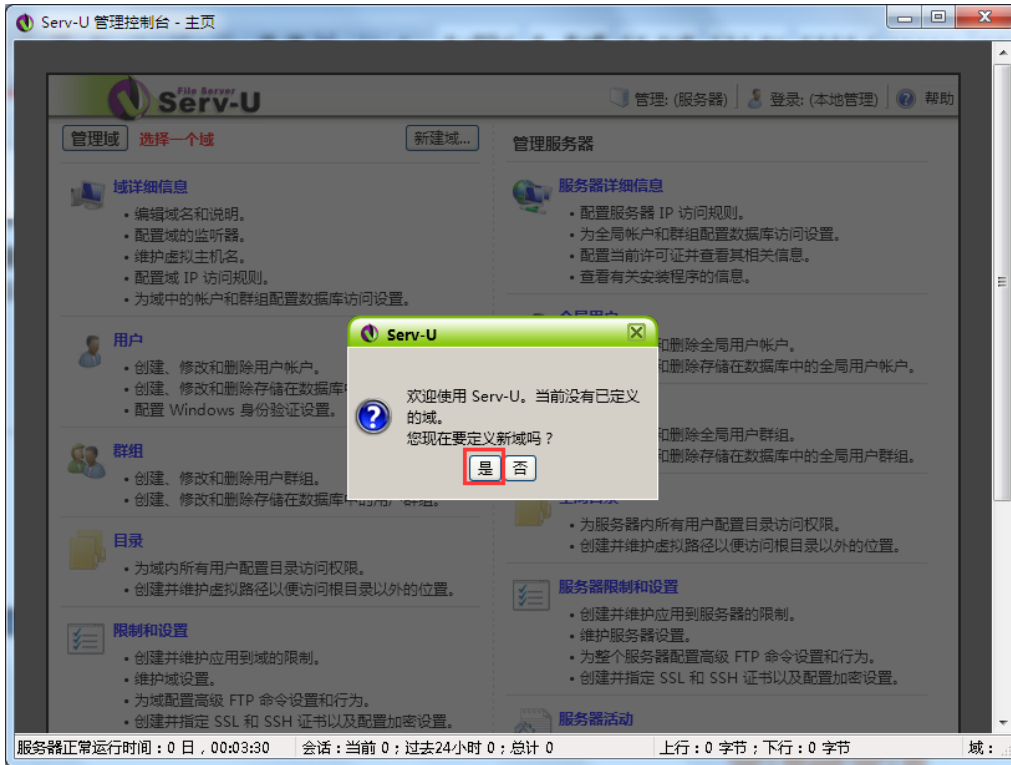


Image - 10

Step 2

Write the name shown in image -11

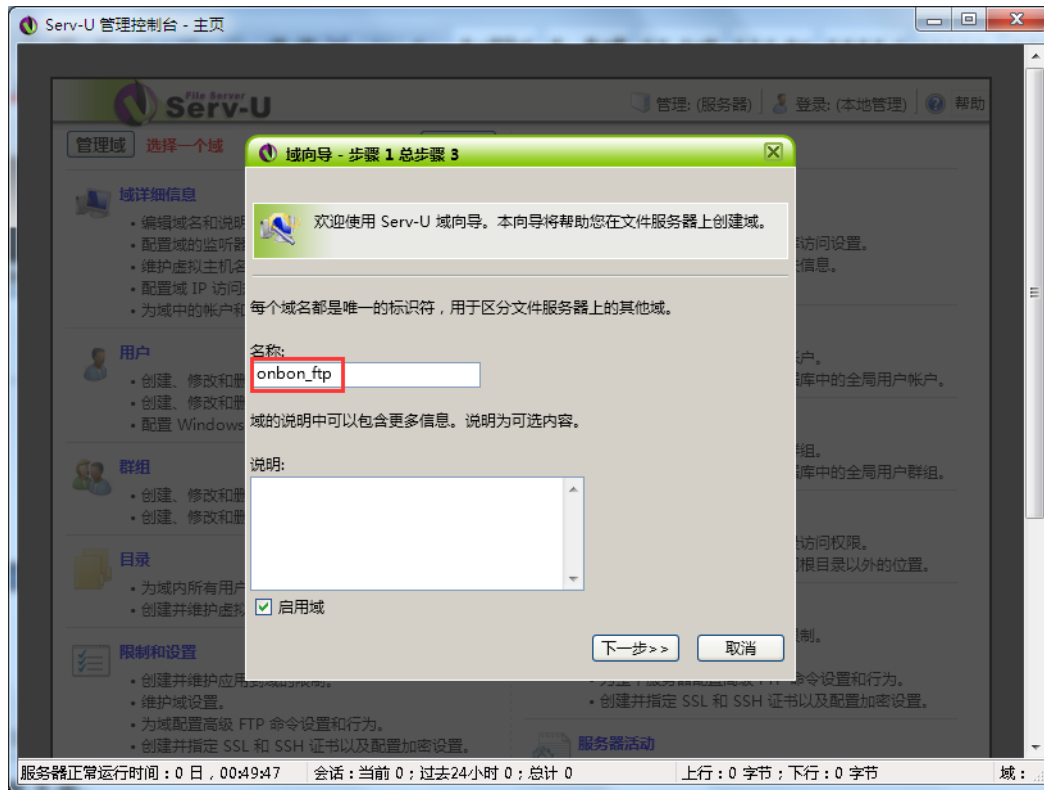


Image - 11

Step 3

Write ftp port, Write the listen ports, this ports is very important and will used in the YQ software, users must remember it .two conditions to write the port: 1.computer connect the network without router ,then the listen ports can write randomly(in range of 1-65535)

2.computer connect the network with router ,then write the computer IP mapping port (different router has different settings for example as shown in image-12)then click the OK as shown in image-13 is ok.



Image - 12

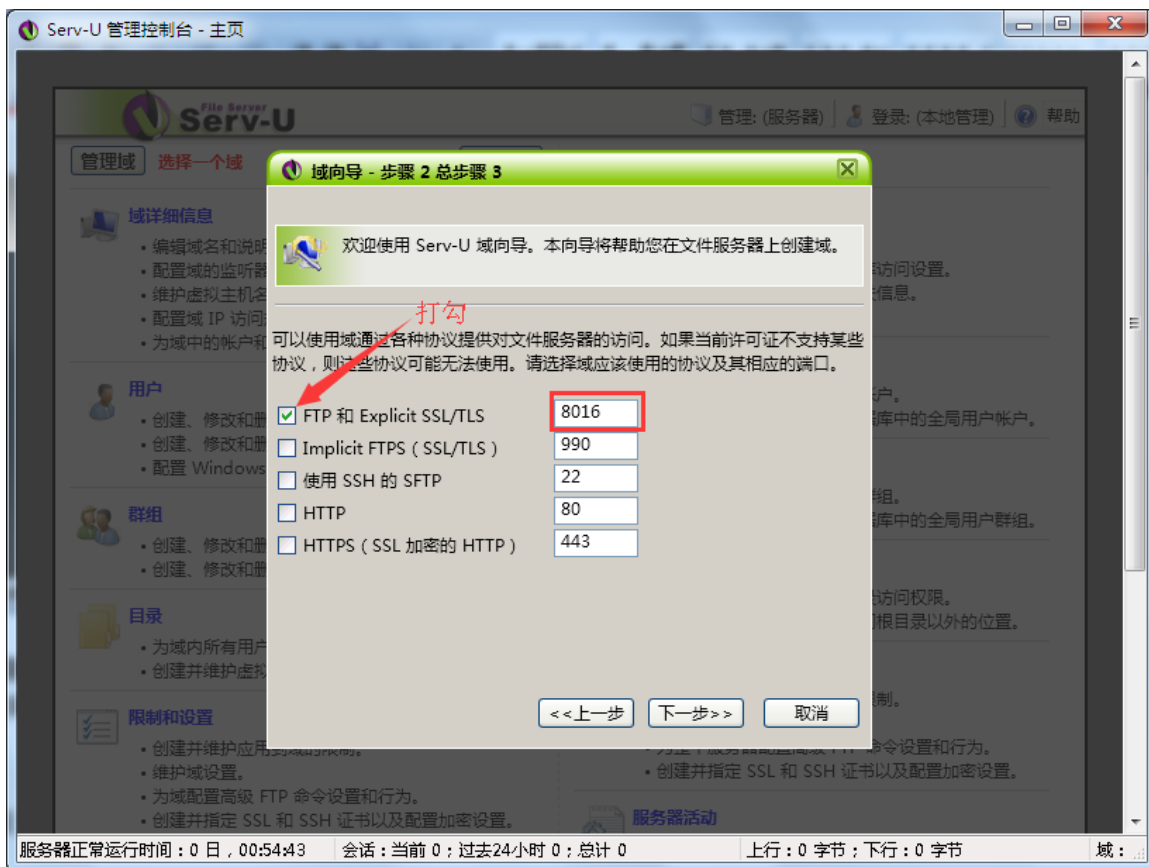


Image - 13

Step 3

Input computer IP As shown in image-14

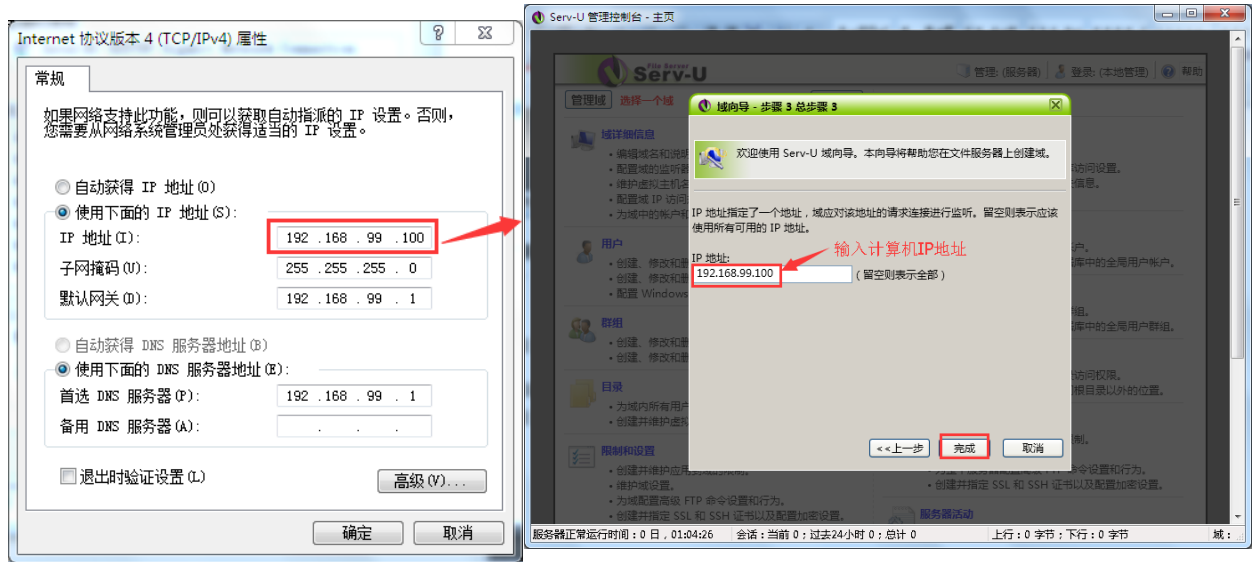


Image - 14

Step 4

Click yes as shown in image -15



image- 15

Step 5

As shown in image -16



Image - 16

Step 6

write the user name as guest ,as shown in image-17

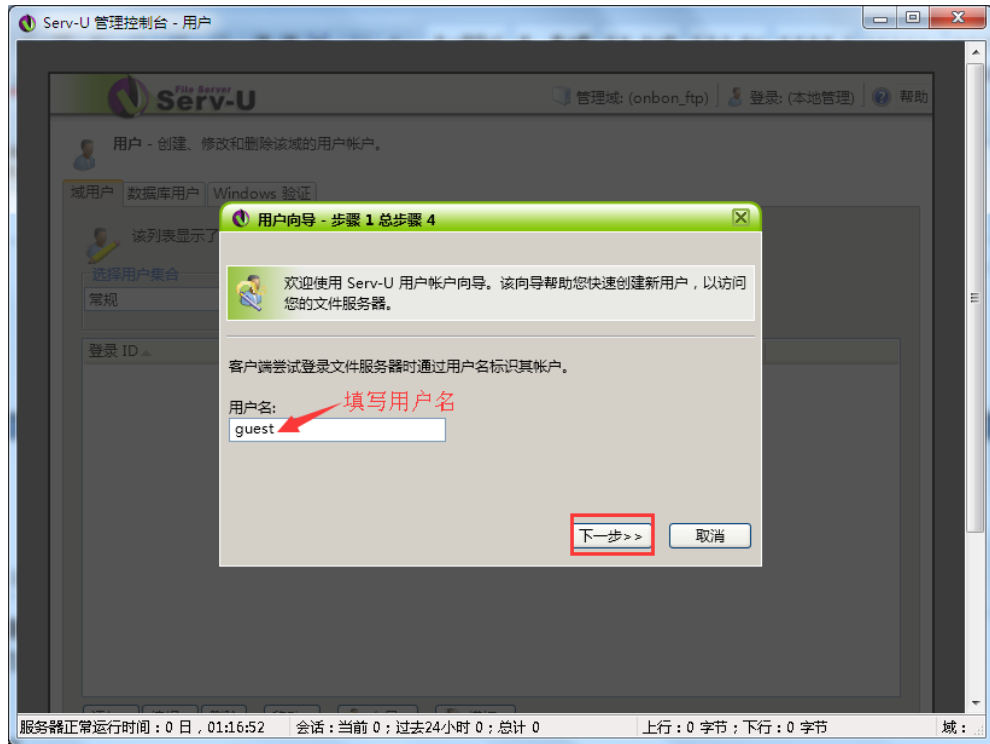


Image - 17

Step 7

for the password also must be guest ,as shown in the image -18



Image - 18

Step 8

Click the button as shown in image -19 to select the folder as root directory, this folder will be the connection of software and controller as shown in image -20

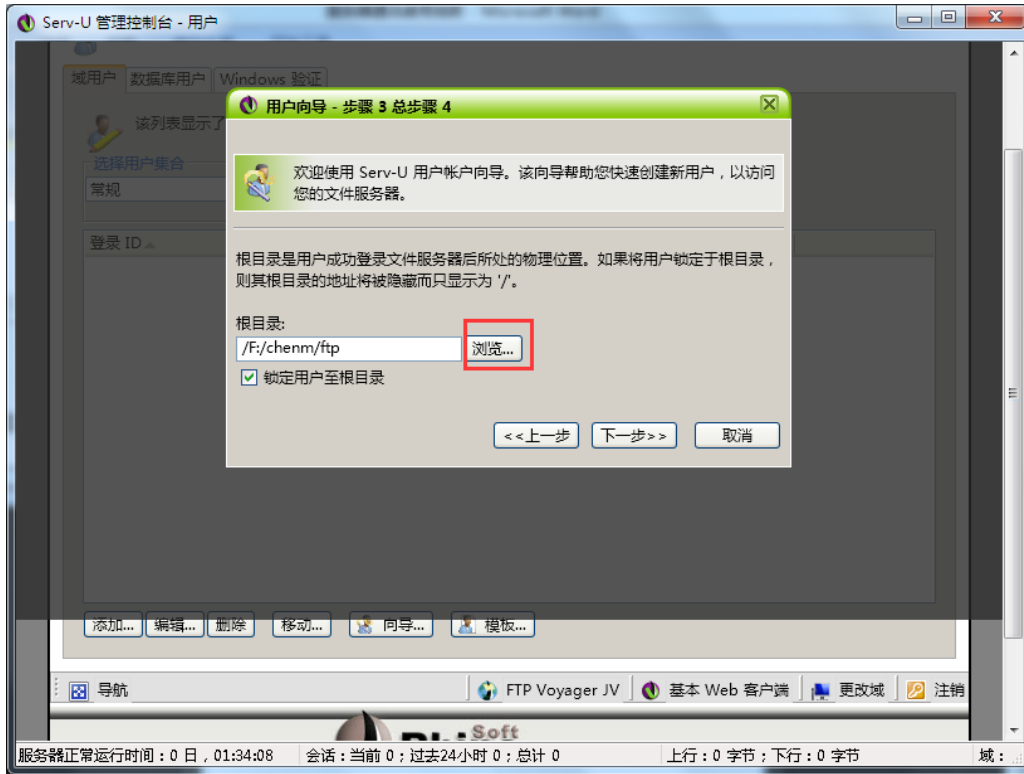


Image- 19

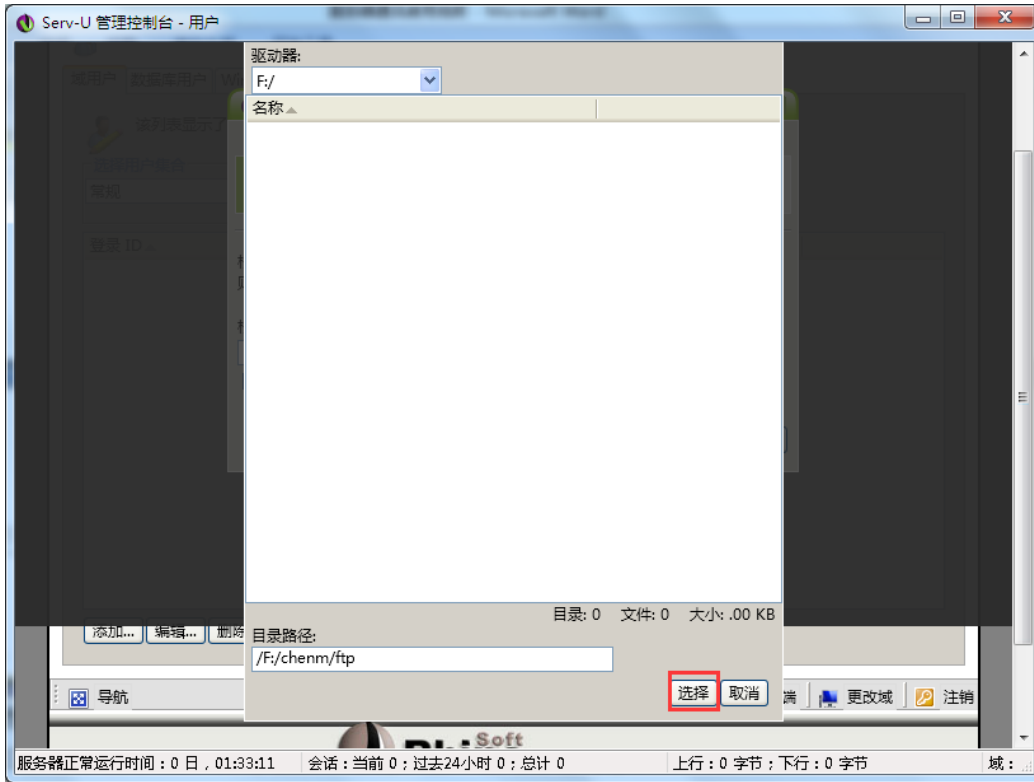


Image- 20

Step 9

At last user make limits and select “fully visit” will finish the built as shown in image-21

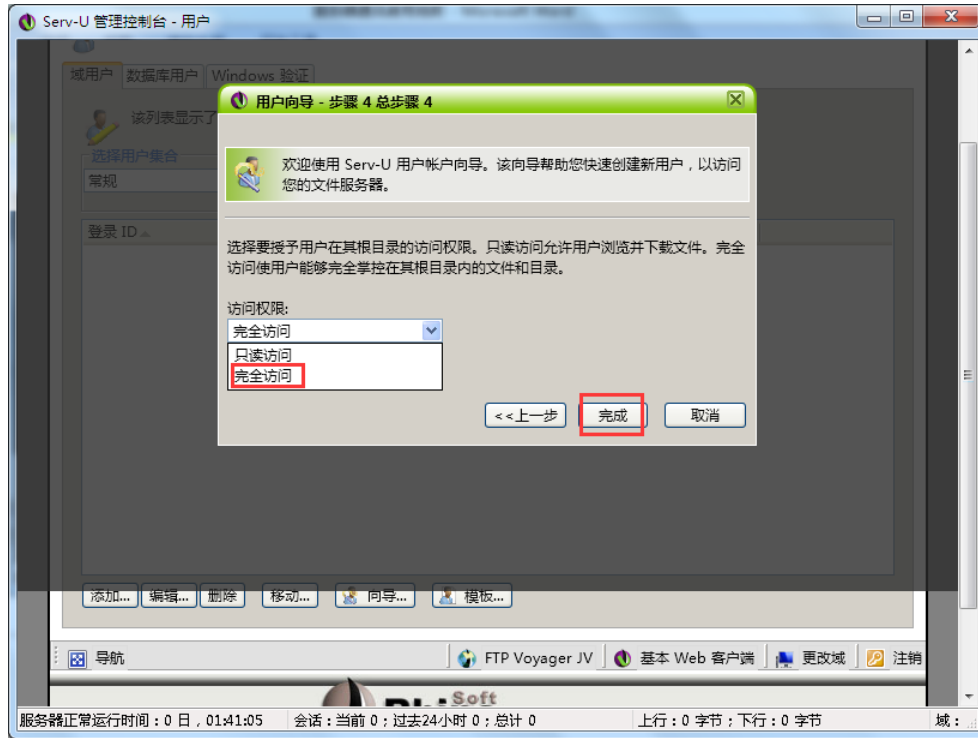


Image - 21

3.2 Set controller IP information

Step 1



Image- 22

Controller connect with 5V power , network cable to connect the controller and computer. As shown in image-22

Step 2

Double click the LedshowYQ 2016
in the image-23



and then set the parameters as shown

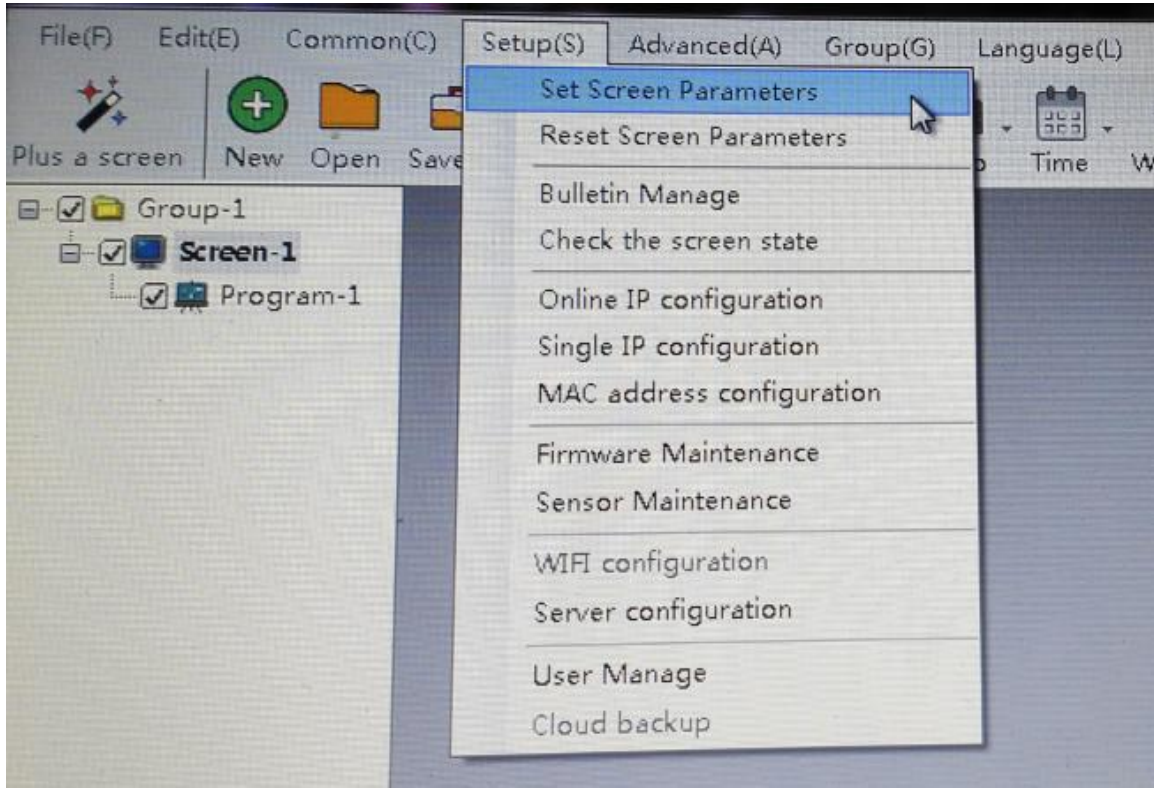


Image- 23

Step 3

Input the password “888” , as shown in image -24

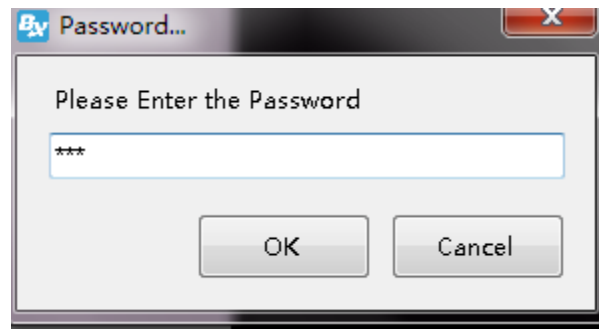
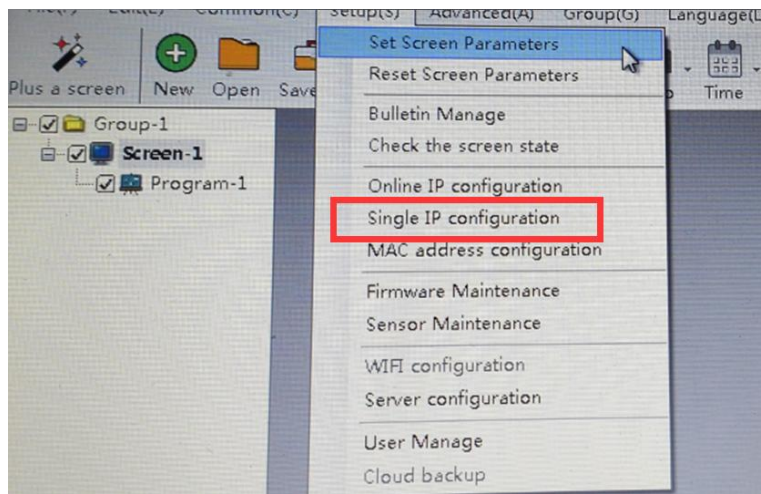
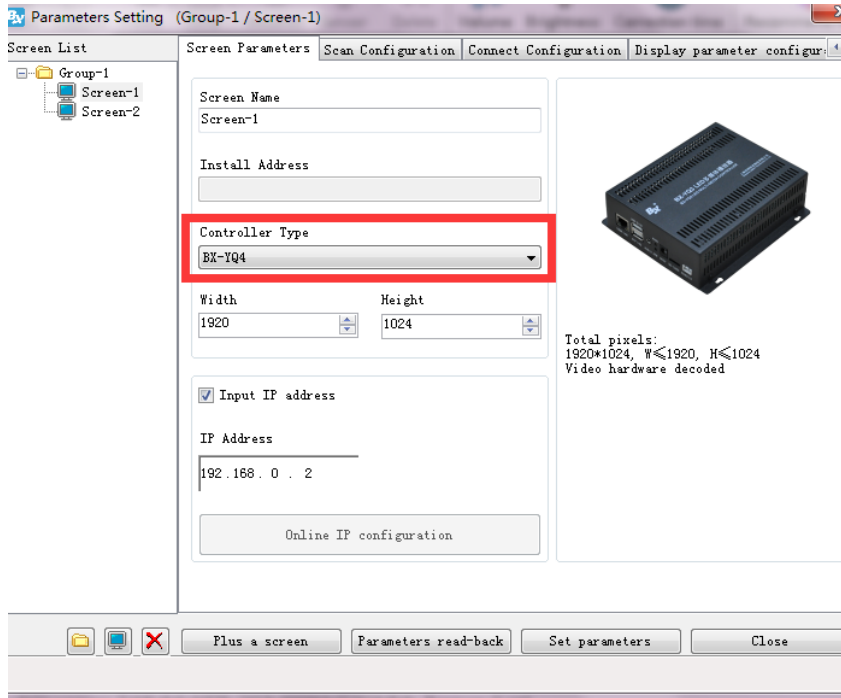


Image- 24

Step 4

Select the controller model in the screen parameters interface ,and then select the” single IP configuration” in the setup menu-- “server configuration “as shown in the image -25



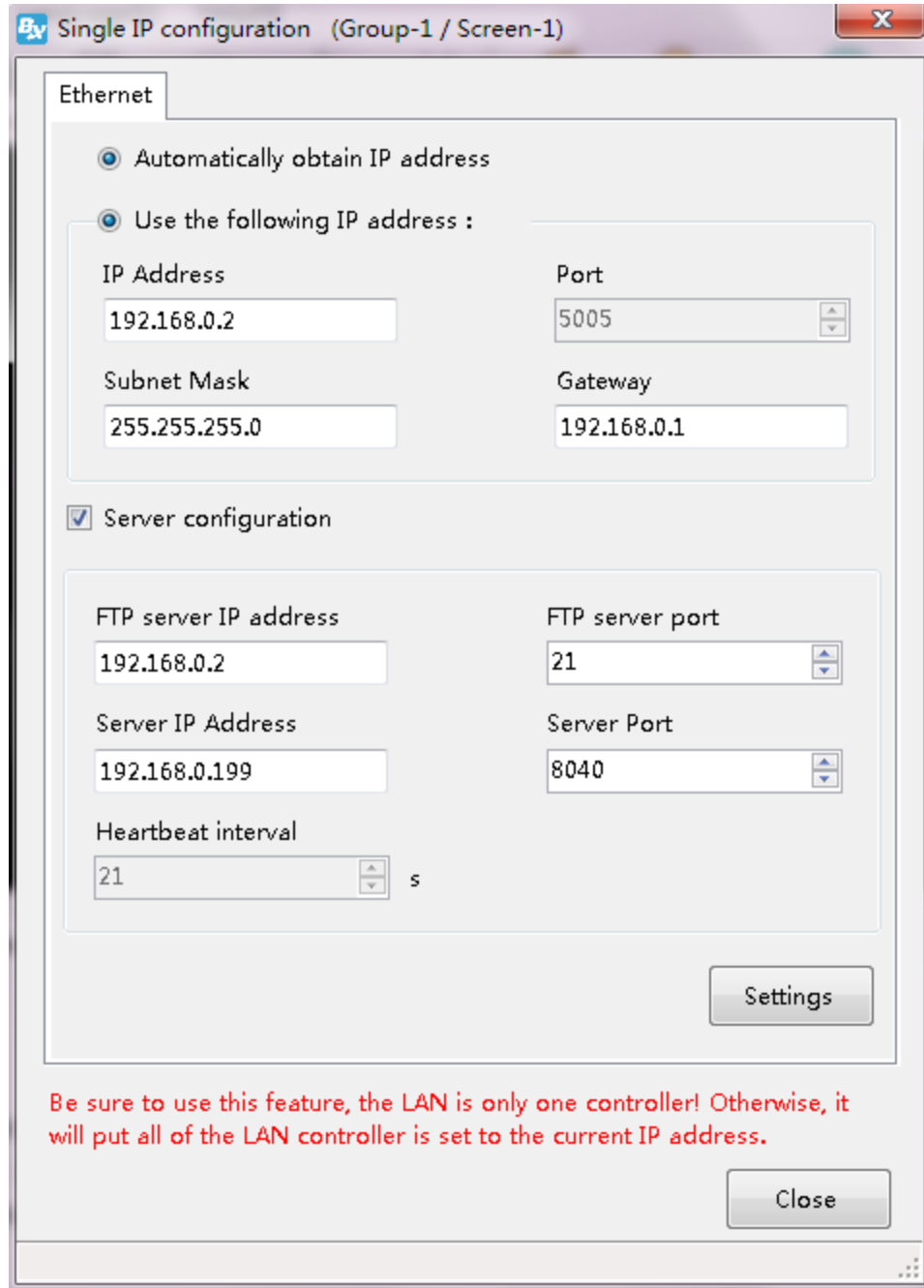


Image- 25

Step 5

Click server configuration as shown in image-25

Step 6

Firstly write the port number in the server configuration interface as shown in the image-27, this port number is the listen port which mentioned in built the FTP server (check step 8 in built fileZilla or Step3 in built the Server-U) then start the server is ok

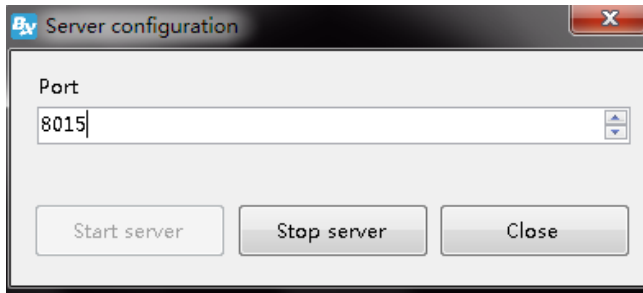
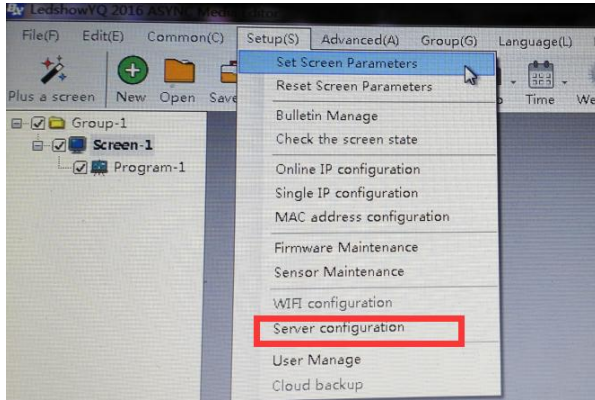


Image- 26

Step 7

after start the server then should set the controller ip as shown in image-28

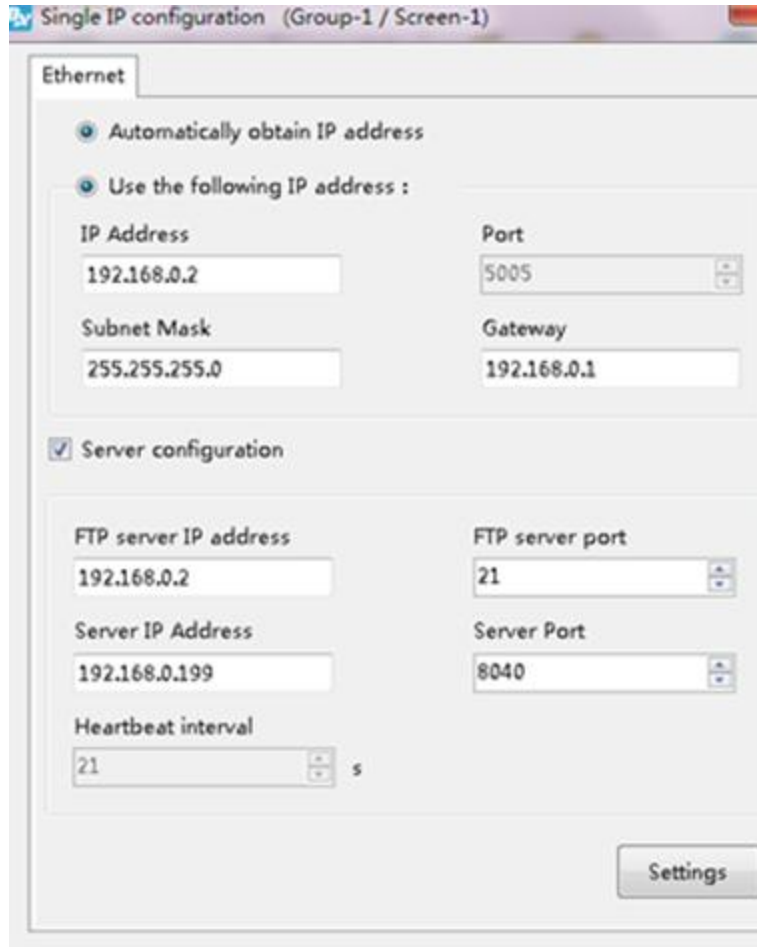


Image- 27

Step 8

Firstly should write the Controller IP, the first two number should be same as the first two number of the computer IP ,the third number should be the default network segment 1 of 3G router, the last number can be randomly(value range is 1-255), the first three number of the gateway should be same as the first three number of controller IP ,the last number should be 1 (if connect with the 4G wireless router ,the IP and gateway can be written randomly) shown in the image -29

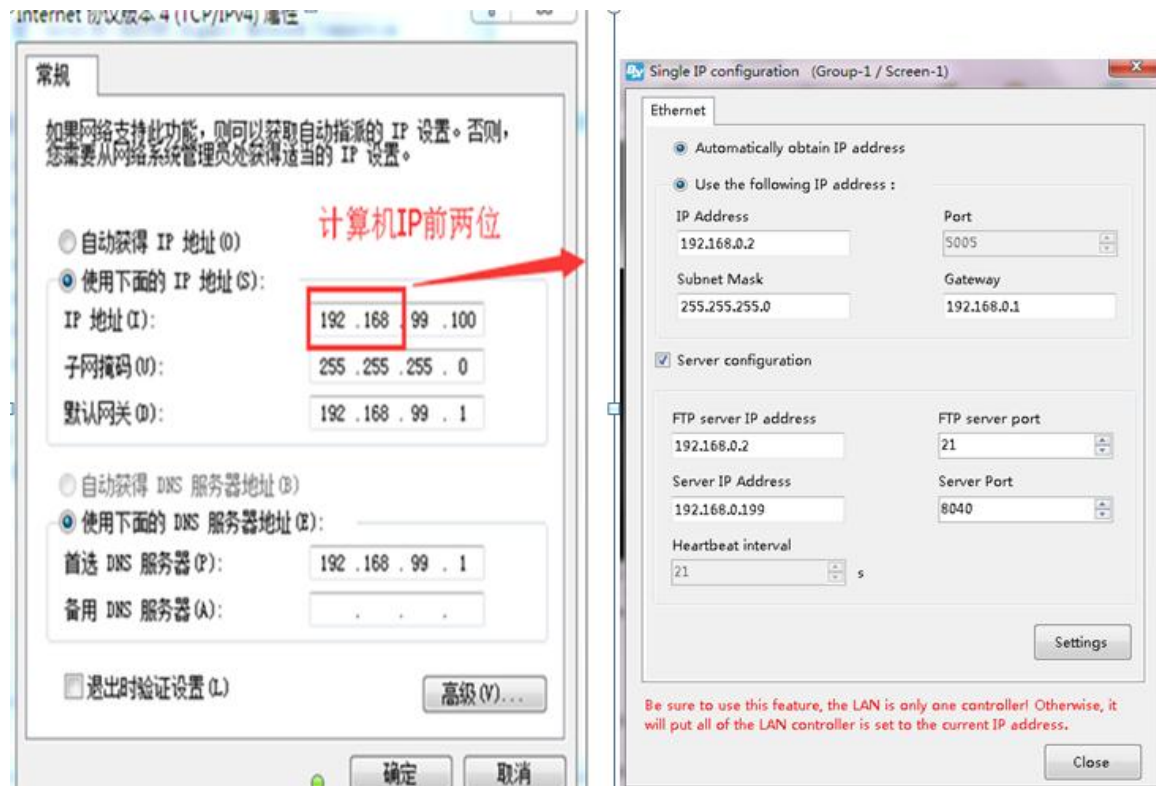


Image- 28

Step 9

How to Write the FTP server IP ?this ip is the computer public ip which users used for built the FTP server, users can check from www.baidu.com by input" network ip) if other country need use google is also ok.as shown in image-30

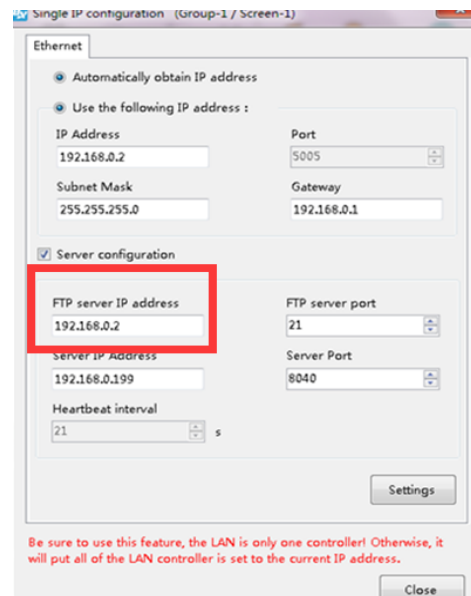
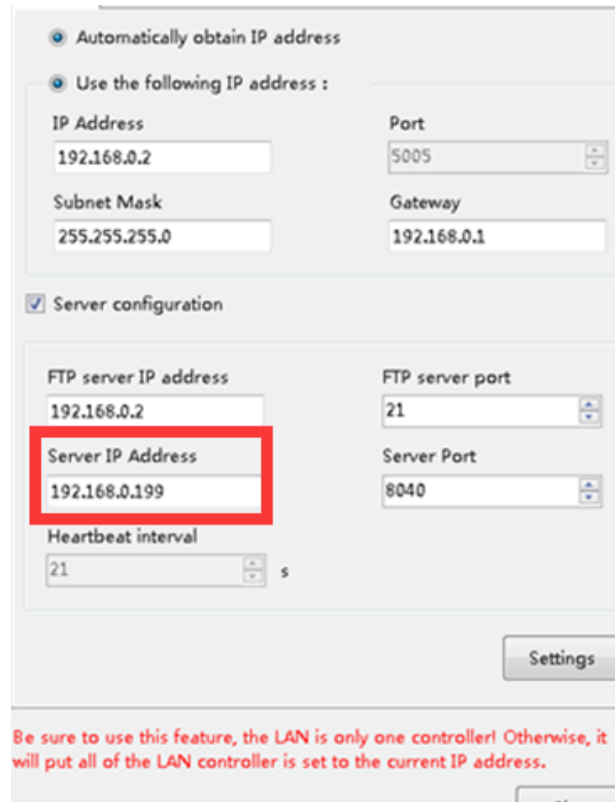


Image - 30

Step 10

How to write the server IP ,that is the computer public ip which we used for set the controller IP, Use google for checking is ok ,as shown in the image -31



The screenshot displays a network configuration window with the following fields and values:

- Automatically obtain IP address
- Use the following IP address :
 - IP Address: 192.168.0.2
 - Port: 5005
 - Subnet Mask: 255.255.255.0
 - Gateway: 192.168.0.1
- Server configuration
 - FTP server IP address: 192.168.0.2
 - FTP server port: 21
 - Server IP Address: 192.168.0.199** (highlighted with a red box)
 - Server Port: 8040
 - Heartbeat interval: 21 s

A "Settings" button is located at the bottom right. A red warning message at the bottom states: "Be sure to use this feature, the LAN is only one controller! Otherwise, it will put all of the LAN controller is set to the current IP address."

Image-31

Step 11

Write the FTP server port ,this port should be same as the port we mention in the step6 as shown in the image -32

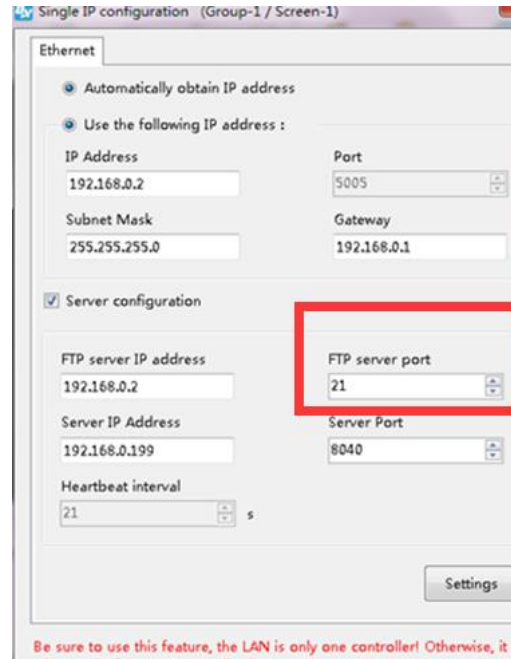


Image - 32

Step 12

Finally click the settings is ok ,after 10s will prompt that IP information setting successfully!

3.3 Controller connect with the wireless router

After set the controller ip ,we should remove the computer network cable ,then connect with router .usually we use two kinds of router ,3G industrial wireless router and 3G/4G industrial router, users can set according to different router model.

3.3.1 connect with the 3G industrial wireless router**Step 1**

Insert the SIM card to 3G wireless industrial router ,connect the receiver then use 5V power to connect with the router as shown in the image -34



Image - 29

Step 2

Network cable connect the controller and router as shown in the image -35



Image - 30

3.3.2 connect with the 3G/4G industrial router

Step1

Insert the SIM card to 3G/4G industrial router ,connect the receiver then use 5V power to connect with the router as shown in the image -36



Image - 31

Step 2

Use USB cable to connect the router and controller (attention: after controller connect with the server, the yellow light is fast blinking /200ms; if controller didn't connect with the server, the 4G router is online ,then the yellow light is slowly blinking /2s) as shown in the image-37



Image - 32

Step 3

After controller connect with the 3G/4G industrial router ,if u use the router for network , should check if the router have the" NetSniper" function or not ,must close the NetSniper function ,if not ,the controller can't communicate successfully. As shown in the image-38



Image - 33

4. CONTACT US

SHANGHAI ONBON TECHNOLOGY CO.,LTD

Tel:86-15921814956

website : <http://www.onbonbx.com>

SECONDARY DEVELOPMENT SERVICE

MAIL: dev@onbonbx.com

onbon@onbonbx.com